

# Merle Hay Square

## Retail

### Available Space

- + Suite 3410 - 1,400 SF
- + Suite 3424 - 1,400 SF

### Lease Rate

- + \$12.50 SF NNN
- + Operating Expenses: \$4.77/SF

### Property Features

- + 20' x 70' bays or 25' x 70' bays
- + Traffic Counts: 22,300 per day
- + 5.44/1,000 SF parking ratio
- + Co-tenants include: Great Clips, Jackson Hewitt, Labor Max Staffing, Boost Mobile and La Tapatia Grocery

3408 - 3516 Merle Hay Road  
Des Moines, Iowa  
[www.cbre.com/desmoines](http://www.cbre.com/desmoines)



## Contact Us

### Bill Wright

Senior Vice President  
+1 515 221 6672  
[bill.wright2@cbre.com](mailto:bill.wright2@cbre.com)  
Licensed in the State of Iowa

### Chris Pendroy, CCIM, SIOR

Senior Vice President  
+1 515 221 6605  
[chris.pendroy@cbre.com](mailto:chris.pendroy@cbre.com)  
Licensed in the State of Iowa

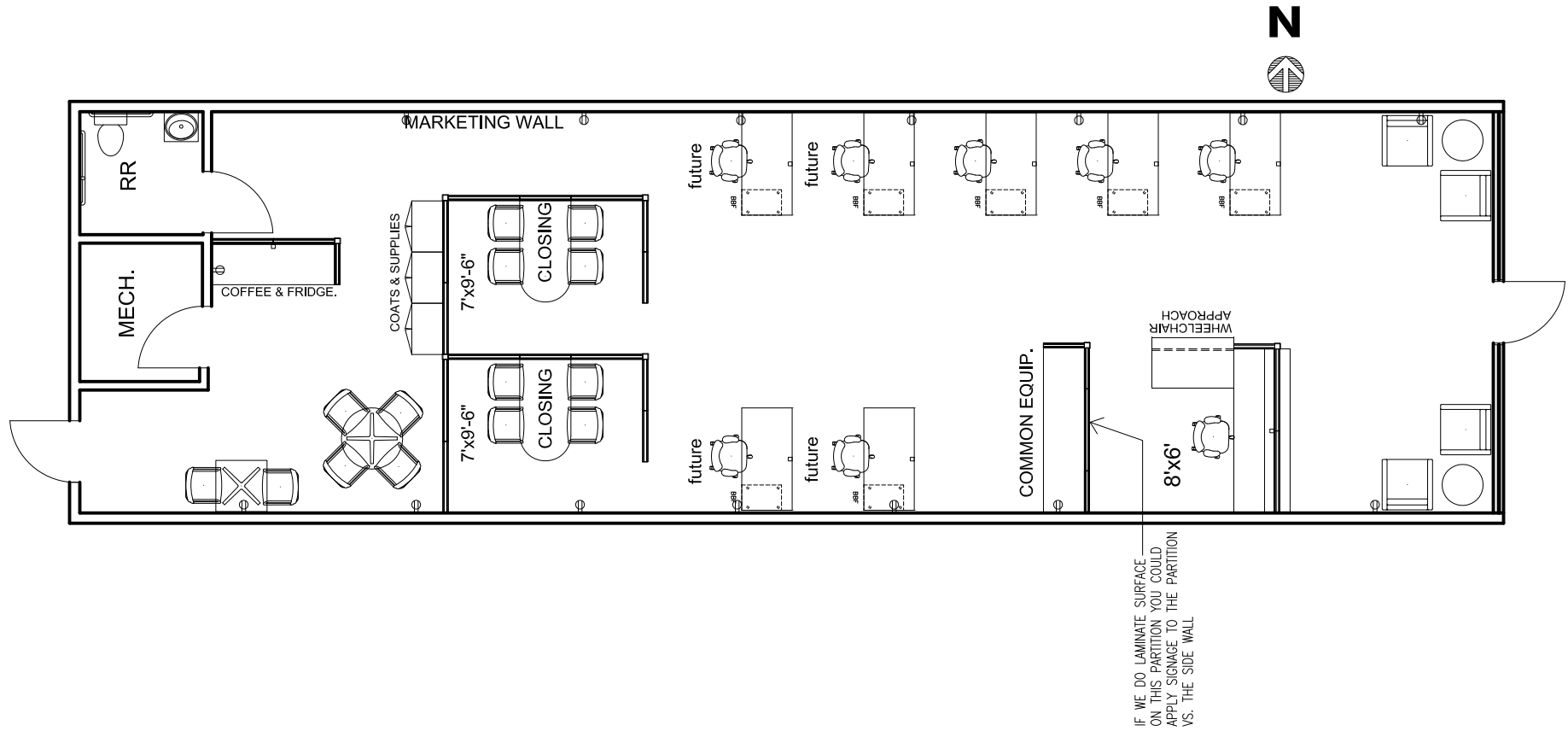
### Grant Wright

Senior Associate  
+1 515 221 6695  
[grant.wright@cbre.com](mailto:grant.wright@cbre.com)  
Licensed in the State of Iowa

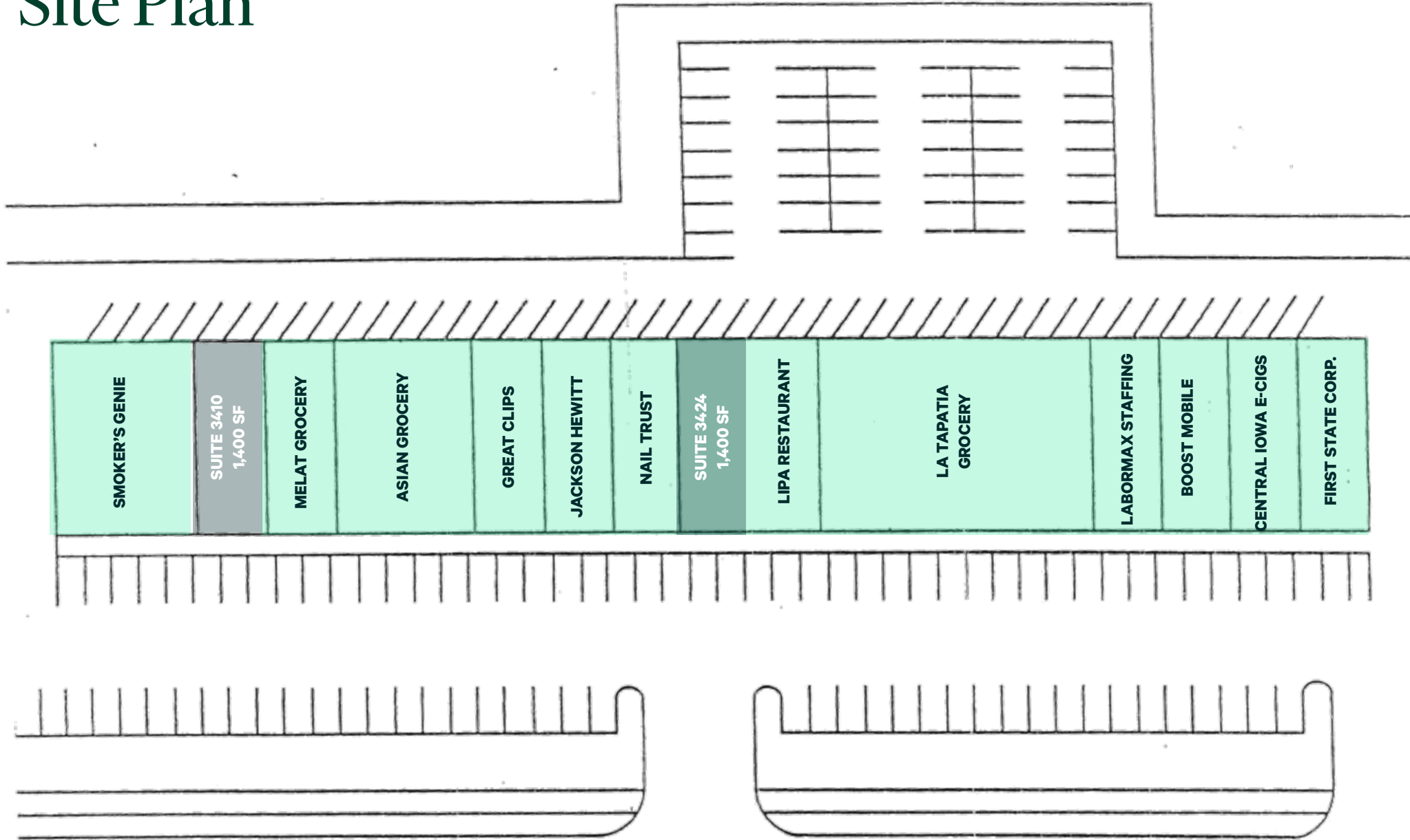
### Dakota Albrecht

Sales Associate  
+1 515 221 6665  
[dakota.albrecht@cbre.com](mailto:dakota.albrecht@cbre.com)  
Licensed in the State of Iowa

# Suite 3410 - 1,400 SF



# Site Plan



MERLE HAY ROAD

# Merle Hay Square

3408 - 3516 Merle Hay Road | Des Moines, Iowa

For Lease

# Location



© 2023 CBRE, Inc. All rights reserved. This information has been obtained from sources believed reliable, but has not been verified for accuracy or completeness. You should conduct a careful, independent investigation of the property and verify all information. Any reliance on this information is solely at your own risk. CBRE and the CBRE logo are service marks of CBRE, Inc. All other marks displayed on this document are the property of their respective owners, and the use of such logos does not imply any affiliation with or endorsement of CBRE. Photos herein are the property of their respective owners. Use of these images without the express written consent of the owner is prohibited.