

FOR LEASE

1001 GRAND AVENUE

OFFICE

WEST DES MOINES, IOWA



OFFICE SPACE

Office space for lease with high quality finish. East side of 2nd floor is available. Floor plan includes 6 private offices, 2 conference rooms, and workstations.

+ Available Space

- Approximately 3,500 SF

+ Lease Rate

- \$15.00/SF plus janitorial & utilities

+ Building Features

- High quality finish- former financial services company

- Headquarters building for Bernau Capital Partners
- Passenger elevator
- Ample on-site parking
- Built in 1990
- Monument signage available
- Building conference room and fitness center available



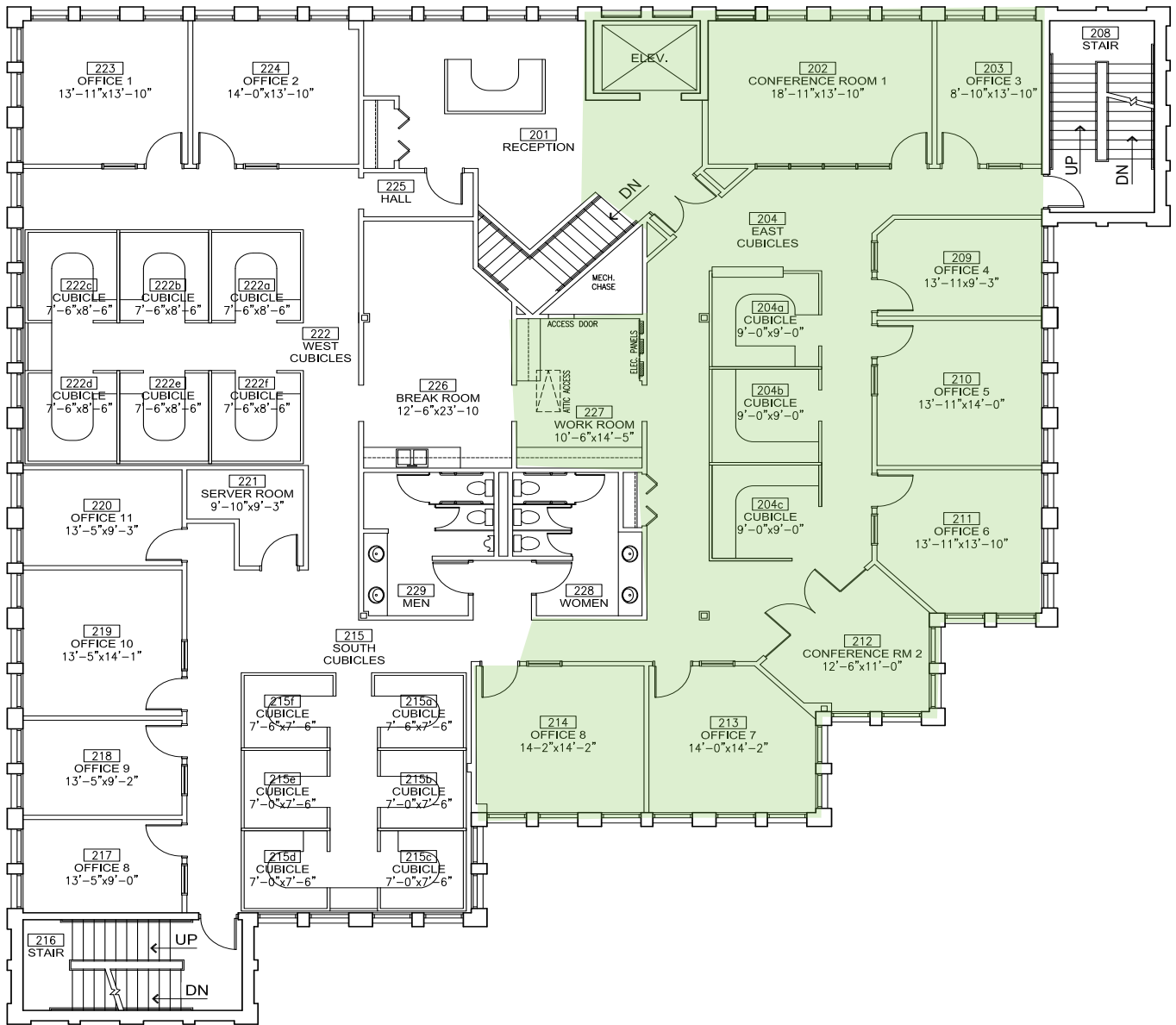
CBRE | HUBBELL COMMERCIAL

6900 Westown Parkway
West Des Moines, Iowa 50266
www.cbrehc.com

CBRE | **Hubbell
Commercial**
Part of the CBRE affiliate network

FOR LEASE 1001 GRAND AVENUE

OFFICE
WEST DES MOINES, IOWA



SECOND FLOOR PLAN - EXISTING CONDITIONS

SCALE: 1/16" = 1'-0"

DATE: 11/24/2015

FOR LEASE 1001 GRAND AVENUE

OFFICE
WEST DES MOINES, IOWA

2015 Demographics	1-mile	3-mile	5-mile
Population	11,811	79,296	191,978
Households	5,365	35,331	81,736
Average HH Income	\$62,242	\$77,540	\$78,531
Median HH Income	\$51,180	\$58,108	\$57,044
Median Age	34.9	37.5	36.0



CONTACT US

BILL WRIGHT

Senior Vice President

+1 515 221 6672

bill.wright@cbre-hubbell.com

© 2016 Hubbell Commercial Brokers, L.C., d/b/a CBRE|Hubbell Commercial. We obtained the information above from sources we believe to be reliable. However, we have not verified its accuracy and make no guarantee, warranty or representation about it. It is submitted subject to the possibility of errors, omissions, change of price, rental or other conditions, prior sale, lease or financing, or withdraw without notice. We include projections, opinions, assumptions or estimates for example only, and they may not represent current or future performance of the property. You and your tax and legal advisors should conduct your own investigation of the property and transaction.

Photos herein are the property of their respective owners and use of these images without the express written consent of the owner is prohibited.

LISTING #1500278

CBRE | Hubbell
Commercial
Part of the CBRE affiliate network